



भारतीय वन्यजीव संस्थान
Wildlife Institute of India



UNITED NATIONS
Office for Outer Space Affairs

MAXAR



WEBINAR ON “DISASTER AND WORLD HERITAGE WITH FOCUS ON PANDEMICS”

22 MAY 2020

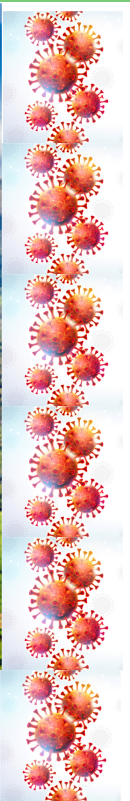
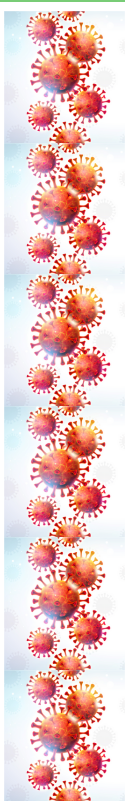
Organized by

Wildlife Institute of India - Category 2 Centre (WII-C2C)
for World Natural Heritage Management and Training
for Asia and the Pacific Region, under the auspices of UNESCO,

in collaboration with

UNESCO World Heritage Centre, International Centre for the International Centre for the
Study of the Preservation and Restoration of Cultural Property (ICCROM),
United Nations Office for Outer Space Affairs (UNOOSA), MAXAR Technologies
and Central Zoo Authority, India (CZA)

A REPORT



CONTENTS

- Background Pg. 1
- Webinar Session
 - o Keynote speakers Pg. 2 - 3
 - o Q&A with expert panel Pg. 4 - 8
 - o Closing comments Pg. 9
- Recommendations Pg. 10
- Profile of speakers Pg. 11 -12
- List of participants Pg. 13 - 21



ORGANIZING AND REPORT PREPARATION

Dr. Dhananjai Mohan, Director, Wildlife Institute of India, Dehradun
Dr. Gautam Talukdar, Scientist In-charge, Wildlife Institute of India - Category 2 Centre
Mr. Niraj Kakati, Technical Officer, Wildlife Institute of India - Category 2 Centre
Mr. Anuranjan Roy, World Heritage Assistant, Wildlife Institute of India - Category 2 Centre
Ms. Pallabi Chakraborty, World Heritage Assistant, Wildlife Institute of India - Category 2 Centre

BACKGROUND

The novel Coronavirus, COVID-19, has affected humanity in an unprecedented manner. This has brought attention to pandemics as a disaster with global disruption of political, social and economic life. In the light of such a global affliction, UNESCO and its 'Convention Concerning the Protection of the World Cultural and Natural Heritage', comprising the largest membership of 193 States Parties, is uniquely placed to address the issues requiring collaboration and cooperation among all countries. The Convention has designated 1121 World Heritage Sites, with 869 iconic cultural monuments and sites, and 252 natural and mixed sites which are home to the most exceptional wildlife and forests on earth.

Pandemics can have serious repercussions for these sites affecting their outstanding universal values. These unique protected areas and cultural spaces are also a critical source of dependence, sustenance and coping mechanism for the associated society, communities, species and natural systems. The lockdown imposed by Governments across the world have disrupted social and economic services for the people and restricted access to many areas including to the World Heritage Sites. As of end-April 2020, UNESCO monitoring data indicates that 72% of all World Heritage Sites are fully closed for access to public.

In this context, Wildlife Institute of India - Category 2 Centre (WII-C2C) for World Natural Heritage Management and Training for Asia and the Pacific Region, under the auspices of UNESCO, in partnership with United Nations Office for Outer Space Affairs (UNOOSA), Vienna and MAXAR, Singapore, organized a Webinar on the theme of "Disaster and World Heritage with focus on Pandemics" on 22nd May, 2020 from 14:00-15:30 hours Indian Standard Time. This was streamed live on platforms like Zoom and YouTube, which was attended by over 500 participants, worldwide.



WEBINAR SESSION

Mr. Niraj Kakati, Technical Officer at the Wildlife Institute of India - Category 2 Centre (WII-C2C), Dehradun, moderator for the session, welcomed the keynote speakers and the expert panelists of the webinar, along with all the viewers attending the live stream, and began the program with a broad overview of the session's theme and objective. The principle context of the session was Covid-19, with a broader aim of the discussion to dwell on pandemics and World Heritage from a wider perspective of impact, mitigation, risk reduction, tools and technological solutions to address such crises. Bringing to light the commemoration of the International Day for Biological Diversity (22nd May, 2020), International Day for Cultural Diversity (21st May, 2020) and International Day for Monuments and Sites (18th April, 2020), he pointed towards the relevance of World Heritage (WH) in the issues that these events seek to address. With this, Mr. Kakati commenced the session by calling upon the first keynote speaker of the session, Dr. Mechtild Rossler..



DR. MECHTILD ROSSLER

Dr. Mechtild Rossler, Director, UNESCO World Heritage Centre, Paris, opened her address by enumerating the many disasters like bush fires, human-induced fires, floods, hurricanes and oil spills that affected World Heritage properties in recent times. The COVID-19 pandemic is an unprecedented crisis that has resulted in the closure of around 90% of the Sites worldwide, having socio-economic impacts on communities, effect on physical monitoring of these sites, along with threats of hunting/poaching in natural sites

and vulnerability of the endangered primates in terms of zoonotic disease. On the other hand, site managers used satellite and drone technology to monitor sites, and provide virtual access to some sites, like the Ngongoro National Park, Africa, for tourists. She informed that the World Heritage Centre and partner agencies are in the process of updating the Policy Document on the Impacts of Climate Change on World Heritage properties, and the resource Manual on Managing Disaster Risks and Climate Change to build resilience for World Heritage. On the occasion of the forthcoming International Day for Disaster Risk Reduction on 13th October, 2020, Dr. Rossler called upon the international community, especially in the Asia-Pacific, to celebrate how people are reducing their exposure to disasters.



Photo: Dr. Mechtild Rossler during her session

DR. DHANANJAI MOHAN

Dr. Dhananjai Mohan, Director, Wildlife Institute of India, Dehradun, in his keynote address explained the genesis and role of the Wildlife Institute of India – Category 2 Centre, under the auspices of UNESCO. He stated that the Centre would be looking to expand its work in several countries of the Region, outside India, and would continue to identify many more biodiversity rich and highly threatened natural areas, in order to include them under the disaster risk reduction strategy of the World Heritage Centre. Dr. Mohan specifically pointed out that there is a critical link between natural sites and pandemics in terms of animal source of diseases, and thus we need to study and take suggestions from the experts on how to plan and conserve these areas for disasters like pandemics.



Photo: Dr. Dhananjai Mohan during his session

With these notes, the session was opened up for a Question-and-Answer on key issues with the panel of experts.

Q. One of the valuable services offered by natural heritage sites is Ecosystem-based Disaster Risk Reduction (EcoDRR). How do space-based tools support EcoDRR?

Dr. Shirish A. Ravan, Head, Beijing Office, UN-SPIDER, UNOOSA, provided the context of the Sendai Framework for Disaster Risk Reduction, 2015 – 2030, by talking about its adoption at the Third UN World Conference on Disaster Risk Reduction in Sendai, Japan, on March 18, 2015. This important agreement has seven targets and four priorities, out of which Priorities 1 and 3 recognize the importance of ecosystems/ natural heritage in DRR. It states that evidence-based indicators of the health of the ecosystems through geo-spatial information can provide knowledge of the natural areas, their problems, and through models on eco-sensitive zoning, sustainable development, forest fire mitigation plans and bio-resource utilization, based on the biophysical parameters, help in decision-making process of restoring balance in the ecosystems and prevent disasters.

Q. What are the key priorities for cultural heritage in times of COVID? How can we prepare for such bio- hazard risks?

Dr. Rohit Jigyasu, Project Manager, ICCROM, Rome, informed about the immense negative impacts of the Covid-19 pandemic on cultural heritage sites and historic cities, including theft, floods, fires, loss of revenue from tourism, loss of livelihood and threat of

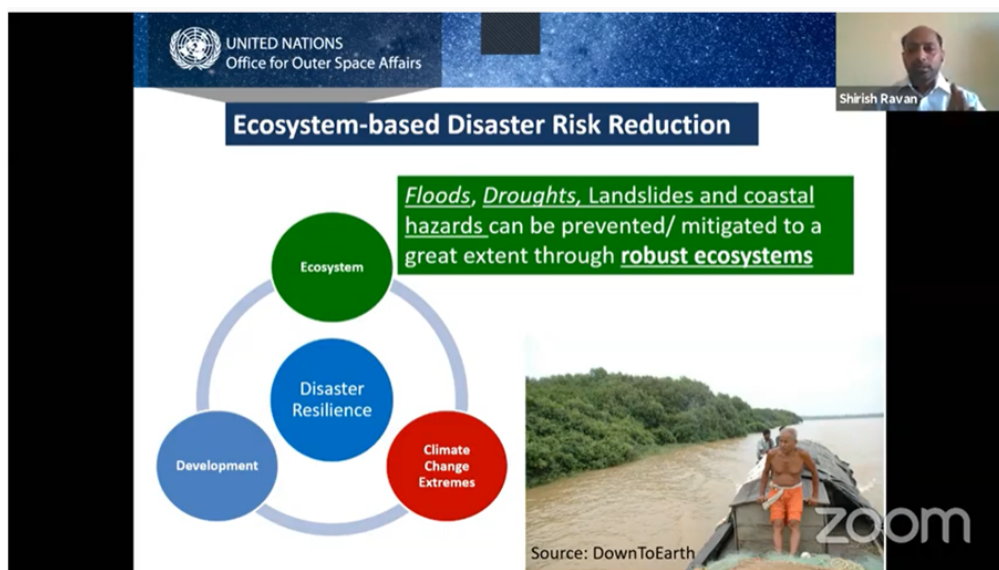


Photo: Dr. Shirish A. Ravan during his session

infection among the local communities, due to lack of monitoring of these sites. With a specific example from the World Heritage City of Ahmadabad in India, he stated that the marginal sections of the population are under extreme risk of infection. It will need a meticulous and economically viable strategy to monitor and manage the sites and people after the lock down, in a way as to prevent any further outbreaks of the pandemic, with the involvement of local communities. On these lines, ICCROM has come up with a digital declaration on 'Heritage in times of COVID', which enlists tools, tips, feature stories and templates to assess, monitor, protect and manage heritage sites, museums and intangible heritage, which can be beneficial for the 'heritage custodians'. ICCROM and IUCN are also working together on the New Knowledge Framework and a Manual for Heritage Management for sustaining public health and culture-nature linkage for harmonious living with a healthy environment.

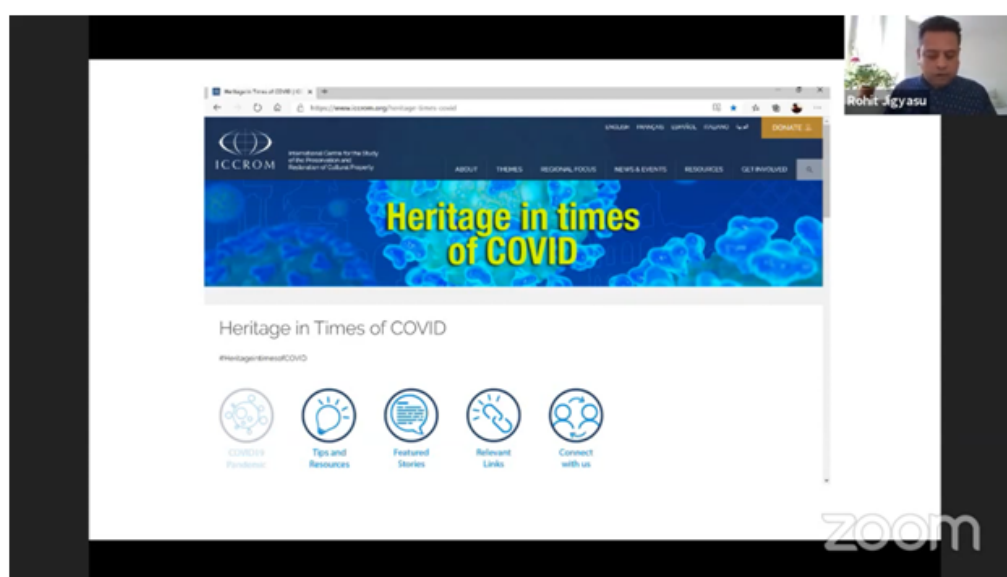


Photo: Dr. Rohit Jigyasu during his session

Q. How does COVID impact heritage management planning for cultural World Heritage Sites? What can be the learning for the post-Pandemic scenario?

Dr. Shikha Jain, Director, of DRONAH, India, shed light on her role as a conduit between the advisory bodies of UNESCO World Heritage Centre and specific heritage sites in funneling the guidelines for site management. Being the first of its kind, this pandemic has had yet-to-be-tabulated impacts on the 'living, thriving and functioning cultural world heritage, which has come to a complete standstill for months'. She predicted that in the wake of end of the lock down phase, regular tourism may be restricted to local tourists and there may be periodic instances of lock down in the post-pandemic period. In such circumstances, digital platforms may be created to facilitate heritage site visits, walks, information dissemination for local and international tourists, as well as to aid in monitoring and managing the sites. Citing the example of the Heritage City of Jaipur in India, she informed about the use of drones for monitoring, protection and management of the city, along with preparation of a long-term management plan to deal with many more potential similar outbreaks of pandemics that may plague the site in the future. She also gave examples of Cultural Landscape and Mixed sites such as Kanchendzonga that are more resilient and sustainable in such situations.



Photo: Dr. Shikha Jain during her session

Q. What is the link between pandemics and animal species? How important is natural heritage in regulating the spread of infectious diseases?

Dr. Sonali Ghosh, Deputy Inspector General, Central Zoo Authority, Ministry of Environment, Forest and Climate Change, Government of India, began her talk by

saying that it is time to pause and ponder on the underlying processes that triggered this ongoing Corona pandemic. Defining the term 'zoonosis', as given by the World Health Organization, she pointed out that 6 out of every 10 emerging infectious diseases in the present times are of animal origin. Furthermore, this has disproportionately affected most iconic wildlife species, along with the poor communities in tropical countries. High human density and the prevalence of biodiversity hot spots makes Asia region particularly vulnerable to the emergence of zoonotic pathogens of wildlife origin. Therefore protection of natural world heritage sites must be part of the global strategy to reduce or prevent future disease episodes by adopting 'animal-inclusive DRR'. Similarly, we need more scientific studies that help us understand the linkages between wild, captive and domesticated animals and human health, under the 'one health approach'.



Photo: Dr. Sonali Ghosh during her session

Q. What solutions do advanced spaced-based earth observation systems offer for disaster mitigation? How can the private sector contribute to such endeavours?

Mr. Abhineet Jain, Lead, Global Industry Business Development, MAXAR Technologies, Singapore, explaining the context of geo-spatial technologies, stated that the advancements over the last 50 years in earth observation from space allow us to see greater and clearer details and develop situational awareness to understand, analyze and manage our heritage in the best possible way. In this field MAXAR owns and operates four very high resolution satellites in 30 cm - 50 cm resolution class which provides critical and actionable information to assist the response efforts, by collaborating with several research and conservation organizations. Dr. Jain illustrated few examples on penguin and seal census in the Antarctica, conducted by University of Minnesota, monitoring of illegal logging within high conservation value areas on a monthly basis, by a POL company in Indonesia and tracking of African elephants from the space, using artificial intelligence and machine learning.

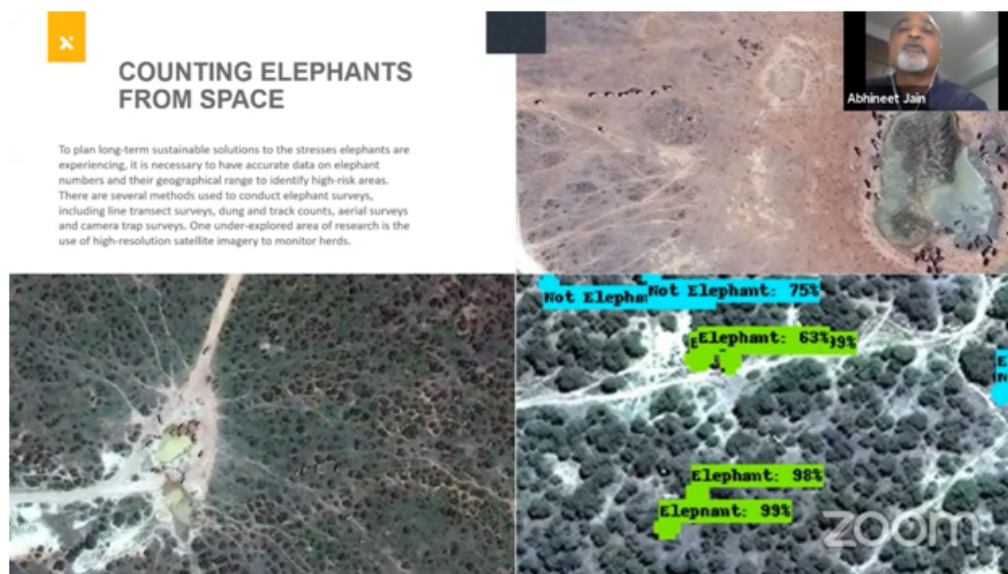


Photo: Mr. Abhineet Jain during his session

Q. What are the implications of climate change and biodiversity loss in the context of COVID-like pandemics? What are lessons for society at large from such crisis?

Dr. Gautam Talukdar, Scientist In-charge, Wildlife Institute of India - Category 2 Centre (WII-C2C), Dehradun, dwelled on the relation between climate change, land-use change, and biodiversity loss and disease transmission from animals to humans. He illustrated a model which predicts that by the year 2070, potential hot spots for viral pandemics in Asia, Africa and South America, will have around 3870 mammal species causing pandemics. Countless people have undergone lifestyle changes as a result of this deadly disease, reminding us that humans are a part of nature and not above it. According to a Cambridge University publication, the world will face a loss of around 5.5% of its GDP in the next five years, impacting both natural and cultural heritage. On the other hand, a 'silver lining' to this situation is that humans have shown tremendous spirit to adhere to rules imposed by world leaders, which may have indirectly resulted in cleaner air and water, coupled with reduced carbon footprint and increased animal movement. Dr. Talukdar added a philosophical perspective that nature has a way of restoring the balance periodically and heal itself, and that it is a shared opportunity to rethink and rebuild our relationship with both culture and nature in this world.

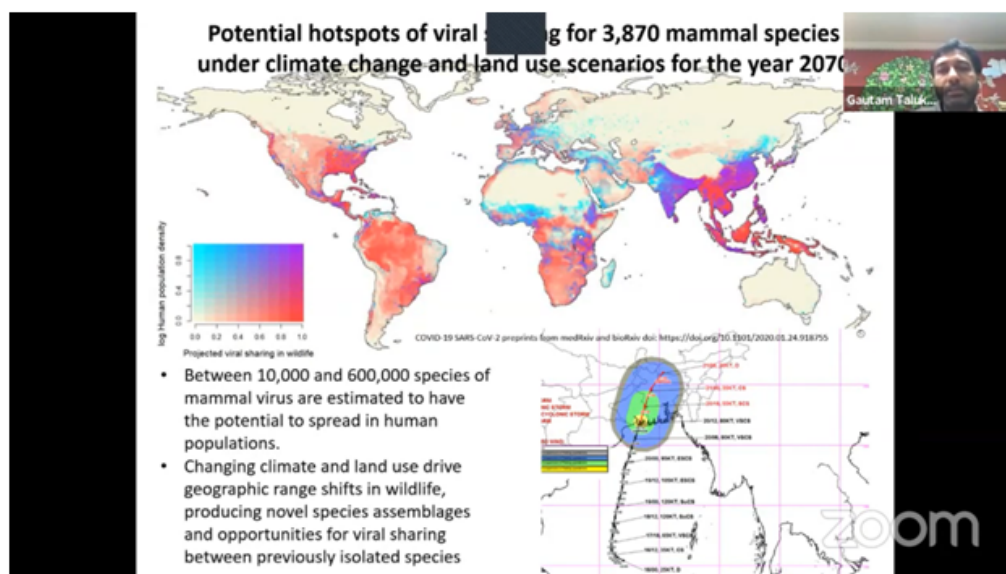


Photo: Dr. Gautam Talukdar during his session

CLOSING COMMENTS

Following the round of responses from the panel of speakers, Dr. Mechtild Rossler was invited for her comments on the discussion. Dr. Rossler expressed her happiness in witnessing the partnership between the UN organizations and other important agencies in addressing the issues related to pandemics and the need to include pandemics in risk assessment for public health as well as for reducing bio hazards. She noted the significance of natural heritage and cultural heritage systems for developing robust ecosystems and resilient communities for management of multiple hazards and dealing with economic crises. She stated that more support is needed for assessment, monitoring and management of sites in order to re-adapt to similar situations. She underlined enhanced safety measures in post-lock down period against disease both for natural areas and for cities. She was happy to learn about new approaches and creative ideas including landscape level approaches for ecosystems and cultural landscapes, evidence-based data and new technologies, nature-based solutions such as animal-inclusive DRR and newer lifestyles in future scenarios.

With these comments, the moderator expressed his gratitude to the panel of speakers for sharing their thoughts and their valuable time. He acknowledged the participation of a diverse audience from around the world. Last, but not the least, colleagues from the host institution and partner organizations were thanked for their support in organising the webinar successfully.

RECOMMENDATIONS

- **Collaboration at various scales and among diverse institutions is the preferred approach to deal with global pandemics that recognize no borders.** Partnership between international government, non-government and scientific institutions will be critical in such an endeavour. UNESCO and its 'Convention Concerning the Protection of the World Cultural and Natural Heritage', comprising the largest membership of 193 States Parties conserving over a thousand iconic cultural and natural sites, is uniquely placed to address the issues requiring cooperation among the range of countries and agencies.
- **There is an urgent need to mainstream and implement Disaster Risk Reduction (DRR) approaches, including Ecosystem-based DRR (Eco-DRR), up to the site management level of World Heritage properties.** International accords such as the UN Sendai Framework, UNESCO Strategy and Manuals, ICCROM tools and templates for Disaster Risk Reduction in World Heritage provide valuable guidelines for such purpose to ensure robust ecosystems and community resilience. However, existing DRR provisions require to significantly account for bio hazards like pandemics, as well as to link with climate change adaptation, for ensuring effective response in World Heritage Sites.
- **Short and long-term strategies are imperative for enhancing the management capacity of heritage sites and supporting the livelihoods of associated communities in the post-pandemic period.** These may include, but not limited to, digital and online access to heritage sites, innovative funding mechanisms, public health management plans, advanced earth observation systems and geo-spatial technology for site assessment, monitoring and planning for disaster management in World Heritage properties.
- **There is a need to study the critical links between pandemics and natural sites with respect to animal origin of infectious diseases, vulnerability of species and the underlying drivers of environmental stress.** Conserving natural World Heritage Sites, which are primarily protected areas comprising the most exceptional wildlife and forests on earth, by ensuring regular monitoring, continued funding, maintaining legal regime, strengthening management capacity and assuring community benefits, is key to maintaining ecological integrity that can help reduce the risk of zoonotic spillover.

Annexure 1: Profile of the keynote speakers and expert panelists at the webinar.

1. Dr. Mechtild Rossler, Director, UNESCO World Heritage Centre, Paris – Mechtild Rössler is the Director of the UNESCO World Heritage Centre. An expert in both cultural and natural heritage and the history of planning, she was appointed in 2013 to the post of Deputy Director of the World Heritage Centre. She has worked at UNESCO Headquarters in Paris in the Division for Ecological Sciences, has held different positions including as Programme Specialist for Natural Heritage, Chief of Europe and North America and Chief of the Policy and Statutory Meeting Section.

2. Dr. Dhananjai Mohan, Director, Wildlife Institute of India, Dehradun – Dhananjai Mohan (IFS) served as Principal Chief Conservator of Forests, Planning and Financial Management and Chairman State Biodiversity Board (Uttarakhand). He has managed protected areas in Uttar Pradesh and Uttarakhand, served as an Associate Professor in the Indira Gandhi National Forest Academy, Professor in the Wildlife Institute of India. He is a fellow of Leadership for Environment and Development (LEAD), Rockefeller Foundation and has been a recipient of Dr Salim Ali fellowship of Ministry of Environment and Forests, Govt. of India in 2005.

3. Dr. Rohit Jigyasu, Project Manager, ICCROM, Rome – Rohit Jigyasu is a conservation architect and risk management professional from India. He served as UNESCO Chair holder professor at the Institute for Disaster Mitigation of Urban Cultural Heritage at Ritsumeikan University, Kyoto, Japan. Rohit is the Vice President of the Executive Committee of ICOMOS and has worked with UNESCO, UNISDR, ICOPRP, Getty Conservation Institute and World Bank for consultancy, research and training on Disaster Risk Management of Cultural Heritage.

4. Dr. Shrish A. Ravan, Head, Beijing Office, UN-SPIDER Programme of the United Nations Office for Outer Space Affairs (UNOOSA) Vienna, Austria – Shirish Ravan is working for the United Nations for over 15 years. Currently, he is leading the United Nations Platform for Space-based Information for Disaster Management and Emergency Response (UN-SPIDER), administered by the UN Office for Outer Space Affairs. He is deeply passionate about promoting applications of space technologies in wider areas of sustainable development.

5. Dr. Shikha Jain, Director, Development and Research Organisation for Nature, Arts and Heritage (DRONAH) - Shikha Jain's experience in cultural heritage of India ranges from steering conservation projects for various state governments to preparing conservation plans for cities and cultural sites, and advising ASI on World Heritage. Representing India as a Cultural Heritage expert, she has steered matters as Member Secretary, Advisory Committee on World Heritage to the Ministry of Culture during India's term in the World Heritage Committee from 2011-2015.

6. Mr. Abhineet Jain, Lead, Global Industry Business Development (Government & Environment), MAXAR, Singapore – Abhineet Jain leads Global Industry Business Development (Government & Environment) for Maxar and is based in Singapore. Abhineet is responsible for Strategies in the International Civil Government and Environment vertical in Maxar. Abhineet has been active in the Remote Sensing and Photogrammetry Industry for the last 25 years and has served various roles in technical, sales and business development.

7. Dr. Sonali Ghosh, Deputy Inspector General - Central Zoo Authority, Ministry of Environment Forest and Climate Change, New Delhi – Sonali Ghosh (IFS) has more than 20 years of work experience in forest and wildlife conservation in India; she was on the management team for two Natural World Heritage Sites and several other Protected Areas in the northeast India. As a Commonwealth scholar in UK, WWF-PATA Bagh Mitra awardee and an UN-IPBES Fellow, her experience in interdisciplinary sciences has helped her actively contribute to the IUCN-ICOMOS networks.

8. Dr. Gautam Talukdar, Scientist - E, Wildlife Institute of India, Dehradun – Gautam Talukdar has experience of over 2 decades in the area of Landscape Ecology and Modelling. He is In-charge of WII-Category 2 Centre under the auspices of UNESCO and serves as an expert for both the Intergovernmental Panel on Biodiversity and Ecosystem Service (IPBES) and the Intergovernmental Panel on Climate Change (IPCC). He is also a member in the IUCN World Commission on Protected Areas.



Photo: Mount Fuji, Japan © <http://whc.unesco.org/>

Annexure 2: List of international participants of the webinar.

Sr. No.	Name	E-mail Address	Organization/Affiliation (If any)
1	Aaron Wesley McKinnon	a.w.mckinnon@gmail.com	European Commission
2	Abdul Musawir	abduledupk34@gmail.com	University of Peshawar
3	Alex	alexam@arthas.com.hk	Arthas
4	Aloxi Centeno Escala	aloxicees@gmail.com	Permanent Mission of Spain
5	Barbara Bolognani	barbarabolognani@gmail.com	UNESCO - Roster for Culture in Emergencies
6	Clara Martínez Becerra	c.martinez@irpmzcc2.org	Instituto Regional del Patrimonio Mundial en Zacatecas, Centro Categoría 2, bajo los auspicios de la UNESCO
7	Clemens Küpper	clemens.kupper@iucn.org	IUCN
8	Cristian Moise	cristian.moise@rosa.ro	Romanian Space Agency
9	Dallahi Youssef	dallahi.youssef1@gmail.com	Cadi Ayyad university
10	Daniel Hernández Ramírez	da.hernandez@irpmzcc2.org	Regional Institute of World Heritage in Zacatecas (RIWHZ)
11	Desmond Fonyuy Wanyenyuy	wanyenyuy@yahoo.com	AFRIGIST
12	Eduardo Escalante	eduardo.escalante.carrillo@gmail.com	Secretaría de Cultura y Deporte del Estado de México
13	Emica Ceasera Lato	amieliee2012@gmail.com	
14	Erica Paula L. Yohanon	elyohanon@up.edu.ph	University of the Philippines Los Baños - School of Environmental Science and Management
15	Erika Ofelia Rentería Ruiz	arqerikarui@hotmai.com	Instituto Regional del Patrimonio Mundial en Zacatecas, Centro Categoría 2 México
16	Erika Renteria Ruiz	arqerikarui@hotmai.com	Instituto regional de patrimonio mundial en Zacatecas
17	Fernanda Heitmann Saraiva	fernanda.saraiva@iphan.gov.br	CC2 Brazil - IPHAN
18	Ghali Abdullahi Abubakar	ghaliaa@zju.edu.cn	Zhejiang University
19	Ivo	ivosmessenger@hotmail.com	ARCSSTEE
20	Jacob Nyangila	jacobn@awhf.net	African World Heritage Fund
21	Jacqueline Reid	gbm.worldheritage@environment.nsw.gov.au	New South Wales National Parks and Wildlife Service
22	Janet Esmeralda Martínez Robles	ja.martinez@irpmzcc2.org	Regional World Heritage Institute in Zacatecas
23	Jaya	upadhyayjaya2014@gmail.com	Alexander von Humboldt International Climate Protection Fellow
24	José Luis Fernández	jlfdz7@yahoo.com.mx	Independent
25	Jose Roman-Gutierrez	jf.roman@irpmzcc2.org	Regional World Heritage Institute in Zacatecas, C2C, under the auspices of UNESCO
26	Joseph King	jk@iccrom.org	ICCROM
27	Kamal Thapa	thekamal@gmail.com	James Cook University
28	Khin Khin Htay	kkhinhtay.geog@gmail.com	Geography. Yangon University of Education
29	Khin Mi Mi Win	khinmimiwingeog@gmail.com	Higher Education
30	Lance Syme	lance@kayandel.com.au	ISCCL, ICICH, Australia ICOMOS
31	Laura de Miguel	laura.demiguel@cultura.gob.es	Ministry of Culture and Sports- Spain
32	Laura Perez	lauraesthermireles@gmail.com	
33	Laura Pérez Mireles	javipella@gmail.com	
34	Leon Orotta	orotta_geomatic@yahoo.com	Humanity Road
35	Iowa chimi Edwige	lowaedwige@gmail.com	Red cross
36	Iyn Wallace	lyn.wallace@des.qld.gov.au	Queensland Government (Australia) Department of Environment and Science
37	Maisonnave	sixtine.m@live.fr	UNOOSA
38	María José Ramírez Morales	mj.ramirez@irpmzcc2.org	Regional World Heritage Institute in Zacatecas
39	Marie Prchalova	m.prchalova@unesco.org	UNESCO
40	Michel Venne	m.venne@unesco.org	UNESCO
41	Mihalache Cristina Elena	mihalache Cristina19@gmail.com	University of Agronomic Sciences and Veterinary Medicine Bucharest
42	Mizuki Murai	mizuki.murai@iucn.org	IUCN
43	Nana	jgerenai@unhcr.org	UNHCR
44	Naz ul Amin	nazulamin1@gmail.com	COMSATS University Islamabad, Pakistan
45	Nimas Ayu Setianingrum	nimaswift@gmail.com	University of Jember
46	Nivia de Andrade Lima	nivia.deandrade@gmail.com	IPHAN
47	Noé Hernández Andrade	nh.andrade@irpmzcc2.org	Regional World Heritage Institute in Zacatecas RWHIZ
48	Obert Mutabani	Obert.Mutabani@opm.gov.na	Government
49	Oluwakorede Adejoro	anthonyadejoro@gmail.com	SGAC
50	omer rehman reshi	omerreshi90@gmail.com	King Fahd University of Petroleum and Minerals
51	Pawan Thapa	pawan.thapa@ku.edu.np	Kathmandu University
52	Ramesh Silwal	rmshsilwal@gmail.com	ICIMOD
53	Rana Bahadur BK	rana_pokhara2007@yahoo.com	Division Forest Office, Gorkha, Nepal
54	Richelle Marie Legaspi	rblegaspi1@up.edu.ph	University of the Philippines Los Baños
55	Roxanne Skosana	roxannes@dbsa.org	African World Heritage Fund
56	Sergio Ortega Muñoz	sergio.ortega@cultura.gob.es	Spanish Ministry of Culture
57	Shubhangi Gupta	shubhi@stanford.edu	Stanford University
58	Simone Sandholz	sandholz@ehs.unu.edu	United Nations University - Institute for Environment and Human Security (UNU-EHS)
59	Ulrika Åberg	ulrika.aberg@iucn.org	IUCN
60	Yi Han	yihanyen@gmail.com	Leiden University
61	Zaid Rana	zaid.rana@spacegeneration.org	Space Generation Advisory Council

Annexure 3: List of participants of the webinar from India.

SL No.	Name	E-mail Address	Organization/Affiliation (If any)
1	A. Mridul	amridul.architect@gmail.com	
2	A. R. Rajeshwari	akkenapally.r@gmail.com	
3	Aarush Garg	adi_rkbansal@yahoo.com	
4	Aayush Raj Tyagi	aayushtyagi791@gmail.com	Chaudhary Charan Singh University
5	Abdul Adil Paray	aadil.hist15@gmail.com	CCAS and Archaeology, University of Kashmir, Srinagar, India
6	Abdul Musawir	abduledupk34@gmail.com	University of Peshawar
7	Abhinav Mishra	abhinavrieajmer@gmail.com	
8	Abhishek	Abhishekdudi007@gmail.com	Wildlife Institute of India
9	Achintya Pran Hazarika	achintyapran35@gmail.com	Gauhati University
10	Adhavan	adhavmarine@gmail.com	Sathyabama Institute of Science and Technology
11	Adithya Prakash M	adithyaprakashm6@gmail.com	Kannur University Campus
12	Aditi	aditi.sharma1912@gmail.com	
13	Aditya Subba	asubba5@gmail.com	Hiralal Mazumdar Memorial College for Women, Kolkata
14	Ahmed A Mehdawi	ahmed78radar@gmail.com	
15	Aishwarya Vinchurkar	231aishu@gmail.com	Institute of Science
16	Ajay Khare	ajaykhare@spabhopal.ac.in	National Monuments Authority, Government of India
17	Ajeet Kumar Singh	ajeetaurangabad@gmail.com	Kuvempu University
18	Ajit Kamble	ajaykamble199328@gmail.com	
19	Ajit Kumar	awasthi.ajit@yahoo.co.in	Wildlife Institute of India, Dehradun
20	Akhilesh Kumar	akhilesh.kumar958@gmail.com	Indian Biodiversity Conservation Society
21	Akoijam Santikumar Singh	santikumara@gmail.com	Wildlife Institute of India
22	Akshada Laxman Amrute	akshadamrute@gmail.com	
23	Akshata Pradhan	akshataprd@gmail.com	ATREE
24	Alex	alextam@arthas.com.hk	Arthas
25	Ali Arzan	ali.arzan625@gmail.com	Aligarh Muslim University
26	Amdavadi Heritage	amdavadiheritage@gmail.com	
27	Kamal Thapa	thekamal@gmail.com	James Cook University
28	Khin Khin Htay	kkhinhtay.geog@gmail.com	Geography. Yangon University of Education
29	Khin Mi Mi Win	khinmimiwingeog@gmail.com	Higher Education
30	Lance Syme	lance@kayandel.com.au	ISCCL, ICICH, Australia ICOMOS
31	Laura De Miguel	laura.demiguel@cultura.gob.es	Ministry of Culture and Sports- Spain
32	Laura Perez	lauraesthermireles@gmail.com	
33	Laura Pérez Mireles	javipella@gmail.com	
34	Leon Orotta	orotta_geomatic@yahoo.com	Humanity Road
35	Lowa Chimi Edwige	lowaedwige@gmail.com	Red cross
36	Lyn Wallace	lyn.wallace@des.qld.gov.au	Queensland Government (Australia) Department of Environment and Science
37	Maisonnave	sixtine.m@live.fr	UNOOSA
38	María José Ramírez Morales	mj.ramirez@irpmzcc2.org	Regional World Heritage Institute in Zacatecas
39	Marie Prchalova	m.prchalova@unesco.org	UNESCO
40	Michel Venne	m.venne@unesco.org	UNESCO
41	Mihalache Cristina Elena	mihalachecristina19@gmail.com	University of Agronomic Sciences and Veterinary Medicine Bucharest
42	Mizuki Murai	mizuki.murai@iucn.org	IUCN
43	Nana	jgerenai@unhcr.org	UNHCR
44	Naz ul Amin	nazulamin1@gmail.com	COMSATS University Islamabad, Pakistan
45	Nimas Ayu Setianingrum	nimaswift@gmail.com	University of Jember

Annexure 3: contd.

SL No.	Name	E-mail Address	Organization/Affiliation (If any)
46	Ar. Mugdha Kulkarni	mugdhakulkarni.v@gmail.com	STES's Sinhgad College of Architecture Pune
47	Archana Ashtekar	archana.ashtekar@jaihindcollege.edu.in	Jai Hind College Mumbai Autonomous
48	Archana Deshmukh	nasadeeya@gmail.com	NASADEEYA Architecture & Conservation
49	Arun Vignesh C S	arunvignesh.cs@gmail.com	Wildlife Institute of India
50	Ashima Sharma	ashima510@gmail.com	Banasthali Vidyapith, Rajasthan
51	Athira Prakash	athira.prakash5837@gmail.com	
52	Augustin Joseph . M	augustin619@gmail.com	St Francis De Sales College, Bengaluru.
53	Avijit Ghorai	avijitghorai2014@rediffmail.com	Vidyasagar University
54	Avneet Kaur	avneetavk@gmail.com	Sri Guru Harkrishan College of Management and Technology, Raipur, Bahadurgarh, Patiala
55	Avni Gupta	avni2501gupta@gmail.com	Amity University
56	Balkumar Nepali	balkumar.nep@gmail.com	Department of Forest and soil conservation
57	Baranidharan	baranidharan.k@tnau.ac.in	TNAU
58	Basharat Y	bashu4u61@gmail.com	Panjab University
59	Beer Bhadra Yadav	beerbhadrayadav02@gmail.com	Banaras Hindu University
60	Bharat L. Godambe	bharatgodambe89@gmail.com	Sacred Heart School- Kalyan
61	Bhumes Singh	bhumes78@gmail.com	WII-C2C
62	Bibhuti Bhusan Gadanayak	bibhuti.undmt@gmail.com	UNDP
63	Biju Dhamapalan	biju@macfast.org	Mar Athanasios College For Advanced Studies Tiruvalla (MACFAST)
64	Bilal Ahmad Malik	bilalmalik013@gmail.com	Higher Education
65	Binoyargha Dam	binoyarghadam@gmail.com	St. Edmund's college
66	Chandamita Das	chandamitadas40@gmail.com	
67	Charu Nangia	cdawan@amity.edu	Amity School of Architecture and Planning, Noida
68	Charu Sharma	charu.khyati@gmail.com	MSU, Baroda
69	Charvee Pradeep Waghe	charveewaghe7@gmail.com	B.N.Bandodkar college of science
70	Chetan Bhalchandra Meher	cmeher472@gmail.com	Viva College Of Arts, Commerce and Science
71	Chinmay Sonawane	csonawane@college.harvard.edu	
72	Chitiz Joshi	chitiz@wii.gov.in	WII C2C
73	Chittaranjan Baruah	chittaranjan_21@yahoo.co.in	Department of Zoology, Darrang College, Tezpur, Assam, India
74	Chongpi Tuboi	chongpi@wii.gov.in	Wildlife Institute of India
75	D. Sowmiya Duraisamy	d.sowmiya22@gmail.com	Nallamuthu gounder mahalingam college
76	Dallahi Youssef	dallahi.youssef1@gmail.com	Cadi Ayyad university
77	David Paulalmuan Vaiphei	lalmuandavid1@gmail.com	St. Edmund's College, Shillong
78	Debabrata Mohanty	mohantydebabrata5@gmail.com	Brajagopika Dham
79	Deep Gandhi	deep.gandhi@tagbin.in	Tagbin
80	Deepankar Barman	deepankarchp@gmail.com	North Eastern Regional Institute of Science and Technology, Arunachal Pradesh
81	Deepashree P	deepashekar2013@gmail.com	St Francis de sales college
82	Devajyoti Bokolia	devajitbk@gmail.com	St Anthony's college
83	Devashish Saurav	devashishsaurav1996@gmail.com	Wildlife Institute of India
84	Dhara Desai	dharadesai0110@gmail.com	
85	Dharani M	murugadossdharani@gmail.com	wildlife Institute of India
86	Dhritiman Das	dhritiz@gmail.com	PHCP
87	Dhruv Jain	dhruvjain4397@gmail.com	
88	Dipika	dipika22march@gmail.com	NITTTR, Chennai
89	Disha Mehta	mehtadisha661@gmail.com	M.S. University of Baroda
90	Divya	divyara096@gmail.com	Indira Gandhi University Meerpur Rewari
91	Dixit Verma	dixitv1302@gmail.com	
92	Dr Dr Maitreyee Roy	maitreyeeroy36@gmail.com	William Carey University
93	Dr Amit Saraf	aysaraf@gmail.com	
94	Dr Apama Saraf	drapamasaraf@yahoo.co.in	The Institute of Science, Mumbai
95	Dr MASRAR SHERIFF	sheriff.asrar@gmail.com	The New College
96	Dr Manoj R. Borkar	borkar.manoj@rediffmail.com	Carmel College for Women Nuvem Goa
97	Dr Meghana Talpade	meghtalpade@gmail.com	SVKM's Mithibai College
98	Dr Nitesh Joshi	niteshcjoshi@gmail.com	Rizvi College Of Arts Science And Commerce
99	Dr Nitesh Joshi	niteshcjoshi@gmail.com	Rizvi college of arts science and commerce
100	Dr Rajvinder Kaur	rajvinderkaur2004@gmail.com	Dr Ganesh Dass DAV College of Education for women, karnal

Annexure 3: contd.

SL No.	Name	E-mail Address	Organization/Affiliation (If any)
101	Dr Sushama Raju Ambadekar	sushama72ambadekar@gmail.com	The Institute of Science, Mumbai
102	Dr Swapnil Prabhulkar	swapnilprabhulkar@gmail.com	Thakur College of Science & Commerce, Mumbai
103	Dr Venkatesh Madhukar Thakur	venkateshthakur.vt@gmail.com	Mithibai College
104	Dr Vishvajeet	vishvajeetpatil@ymail.com	DKTE TEI Ichalkaranji
105	Dr. (Ms.) Michelle L. Desouza	botanist0108@gmail.com	R. D. and S. H. National College and S. W. A. Science College Bandra
106	Dr. Arunima Dasgupta	ad.chakraborty@gov.in	Ministry of Environment, Forest and Climate Change, Govt of India
107	Dr. Atul Govardhan Babar	babaratul@gmail.com	SSR College of Arts, Commerce and Science Silvassa
108	Dr. Bandita Talukdar	tbandita@yahoo.com	PDUAM, Behali, Biswanath, Assam
109	Dr. C. Thilip	thilipcsept@gmail.com	Periyar University Constituent College of Arts & Science, Tamil Nadu
110	Dr. Khushali Pandya	khushalipandya-padra@msubaroda.ac.in	M. K. Amin Arts and Science College, Baroda
111	Dr. Prabhaker Yadav	prabhaker@wii.gov.in	Dept. of Animal Ecology & Conservation Biology
112	Dr. Prasenjit Paul	prasenjit.paul9780@gmail.com	St. Edmund's College, Shillong
113	Dr. Rajani Srivastava	srivastava_252003@yahoo.com	Banaras Hindu University, India
114	Dr. Sanjiban Goswami	sanjiban2000@yahoo.com	St. Edmund's College
115	Dr. Santhosh S	santhoshacharr@gmail.com	Kuvempu University
116	Dr. Shantaj M. Deshbhratar	vmd_1976@rediffmail.com	Bharatiya Vidya Bhavans H. Somani College, Chowpatty, Mumbai
117	Dr. Sharad Goyal	goyalsharad1@rediffmail.com	FSI, Dehradun
118	Dr. Shyamal Dutya	duttashyamal1987@gmail.com	NA
119	Dr. Swati Desai	swatidesai645@gmail.com	SSR College of Arts, Commerce and Science, Silvassa
120	Dr. Ta Suresh	sureshmly@gmail.com	Kerala State Biodiversity Board
121	Dr. M. Jamal Mohamed	jaamal_2006@yahoo.co.in	The New College (Autonomous), Chennai
122	Dr. Ruby Rani	rubygarg2000@yahoo.com	Akal College Of Education Mastuana Sahib Sangrur Punjab
123	Dr. Risyia N	amith.nambron@gmail.com	Kannur university, Mangattuparamba campus
124	Durgesh Tripathi	drdurgeshtripathi@gmail.com	G G S Indraprastha University, Delhi
125	Eugenia Kyndiah	kikikyndiah@gmail.com	
126	Eva Prasher	ar.e.prasher@gmail.com	MM School of Architecture, MM University, Sadopur, Ambala
127	Fathimathul Shalima P P	fathimathulshalimapp@gmail.com	
128	Ganesh Prabhakar Pawar	gpawar1947@gmail.com	Tuljaram Chaturchand College, Baramati (Autonomous)
129	Gaurav Pant	rs.gauravpant@gkv.ac.in	Gurukula Kangri Vishwavidyalaya, Haridwar
130	Gayantha Roshana Loku Kodikara	gayantha_kodikara@yahoo.com	
131	Gazal Sharma	gazs1295@gmail.com	Nepa Environmental Solutions Pvt. Ltd.
132	Geetha Subramanian	geetharch@gmail.com	
133	Girish Kumar E	girishkzd@gmail.com	MGGA College, Mahe
134	Gitanjali	Gitanjalivasi@gmail.com	
135	Gitanjali Kanwar	gitanjalikanwar@gmail.com	WWF-India
136	Gitanjali Rao	gitanjalikr@yahoo.co.in	ADEI, KLETU
137	Gowtha	gowthamvarma810@gmail.com	
138	Gowtham	gowtham@fipple.in	
139	Gowthaman J	gouthamjayaraman14@gmail.com	Bharathiar University
140	Guido Sabatini	guidosabatini.gs@gmail.com	
141	Gunjan Chawla	gunjanchawla001.gc@gmail.com	
142	Gurusaravanan	mgurusaravanan@gmail.com	Institute of Grassroots Governance
143	Hamdi	hmdkcm@gmail.com	On my own
144	Harish G K	harishnaikgk@gmail.com	Kuvempu University
145	Harpreet Kaur	jotharman657@gmail.com	Desh Bhagat College Bardwal-Dhuri
146	Harshika Dhiman	harshikadhiman2000@gmail.com	
147	Harshith Prince	cliffordprince.prince@gmail.com	
148	Himanshi Gupta	himanshi.pg180334@cept.ac.in	CEPT University
149	Himanshu Kumar	himanshupria@gmail.com	
150	Inshu	inshu0302@gmail.com	G. B. pant institute of engineering and technology
151	Ishani Mehta	ishni.mehta@gmail.com	Savitridevi Hariram Agarwal International School
152	Ishita Ganguly Khurana	ishitaganguly23@gmail.com	K.L.M college
153	J. Bhaalasaraswathi	jskharini@gmail.com	
154	Jackson Thounaojam	jackhrdsona@gmail.com	St. Edmund's College, Shillong, Meghalaya (India)
155	Jayant Ghosh	ghoshjk1@gmail.com	Government
156	Jayanta Saha	jayantasaha0088@gmail.com	Sidho-Kanho- Birsha University
157	Jerin George	ar.jrgeorge@gmail.com	DRONAH
158	Jeseentha Mathew	jeseenthamathew109@gmail.com	St. Francis de Sales College
159	Jyoti	jyotiantil5794@gmail.com	Division of Nematology, IARI-Pusa, New Delhi.
160	Jyoti Gupta	gjyoti77@gmail.com	Government college kharkhara (Rewari)

Annexure 3: contd.

Sl. No.	Name	E-mail Address	Organization/Affiliation (If any)
161	Kalpna Roy	kalpanaroy14@gmail.com	Wildlife Institute of India
162	Kamal Thapa	thekamal@gmail.com	James Cook University
163	Kamlesh Kumar	kamleshias201@gmail.com	Rajmata Krishna Kumari Girls Public School Jodhpur
164	Karan Kamani	karan.kamani04@gmail.com	Fibrox3D
165	Kavana S K	Kavanask15@gmail.com	Kuvempu university
166	Kavita Singh	drkavitasingh44@gmail.com	Government official
167	Kavya Nair	kavya.n@ahduni.edu.in	
168	Keerat Garcha	keeratgarcha@live.com	Kolkata Centre for Creativity
169	Khawairakpam Sharonz Devi	khawairakpamsharonz@gmail.com	
170	Kingshuk	kingshuk270413@gmail.com	TISS Guwahati
171	Kirti Wani	kirtiwani@gmail.com	Jeevitnadi living river foundation
172	Komal	komal.potdar@gmail.com	
173	Krishna Gadhvi	kigadhvi98@gmail.com	
174	Krishna Manish	krishnasmanish97@gmail.com	
175	Lalita Ashtekar	lalitaashtekar@gmail.com	WWF- India
176	Lavanya Sharma	lavanyaksharma2008@gmail.com	
177	Laxmi K.C.	nature.laxmi@gmail.com	Forest Office
178	Leela Chauhan	leelachauhan@gmail.com	Sathaye College
179	Leo George	georgeleo8@gmail.com	Central university of Tamil Nadu
180	Lina Bose	linabose08@gmail.com	Indian Institute of technology kharagpur
181	Litton Prosad Mowaliev	litton2030@gmail.com	Shivaji University
182	Madhura Niphadkar	nmadhura@gmail.com	Azim Premji University
183	Malek Soufil Sharifmiya	soufilmalek1373@gmail.com	College of forestry, NAU, Navsari
184	Malsawmdawngliana	valpuia17@gmail.com	Wildlife Institute of India
185	Malsawmkimi	kimkimitae24@gmail.com	
186	Malvika Onial	malvika@wii.gov.in	WII-C2C, under auspices of UNESCO, India
187	Manashi Goswami	mg3238@gmail.com	Assam State Biodiversity Board
188	Manish Kumar Roy	manish02820703413@gmail.com	IIT ISM Dhanbad
189	Manisha Mathela	manishamathela@gmail.com	Wildlife Institute of India
190	Maria José Ramírez Morales	mj.ramirez@irpmzcc2.org	Regional World Heritage Institute in Zacatecas
191	Mariswamy	mariswamykm@gmail.com	
192	Maulik H Amlani	maulik.harishbhai@gmail.com	College of Forestry, Navsari Agricultural University
193	Maunish Prakashbhai Bhavsar	maunish.bhavsar@gmail.com	Ahmedabad World Heritage City Trust
194	Megha	meghab6213@gmail.com	
195	Minal Rathod	minalprathod@yahoo.co.in	OTBS
196	Mirazul Islam Sarker	miraislam732@gmail.com	Who
197	Miss Shruti Harit Papaiya	shrutiharitpapaiya@gmail.com	Thakur College of Science & Commerce
198	Miss. Samruddhi Patil	samruddhipatil2424@gmail.com	
199	Miss Rutuja Ashok Kambale	rutu15397@gmail.com	Shahid Virpatni Laxmi Mahavidyalaya Titave
200	Mohammad Rijban Ansari	rizwanrazaalig15@gmail.com	Aligarh Muslim University, Aligarh
201	Mohammed Faizan	faizan2018107033@gmail.com	
202	Mohd Arman	armanpilot.khan@gmail.com	Department of Tourism and Hospitality Management
203	Mohit Dhingra	mohit.dhingra2@in.ey.com	Ey
204	Mohit Phulara	phularamohit14@gmail.com	GBPNIHE
205	Monali Sen	monali@wii.gov.in	
206	Monarch Singh	monarchsingh25000@gmail.com	
207	Monark Dave	333monark@gmail.com	Volunteer nature club
208	Monika Sharma	ms802366@gmail.com	Kachchh University
209	Mr Ravindra Yashwant Patil	raviraj.patil858@gmail.com	PPES ACS College Veshvi Alibag
210	Mr. Rahul S. Kamble	rahulkamble3470@gmail.com	Shahid Virpatnai Laxmi Mahavidyalaya, Titave
211	Ms. Sarita Bisht	bishtaaru@gmail.com	FRI, Dehradun
212	Ms. Vaishnavi Kundan Mayekar.	vaishnavemayekar66@gmail.com	VPM's B.N.Bandodkar College of Science, Thane (W)
213	Muhammad Pramulya	muhammad.pramulya@faperta.untan.ac.id	Tanjungpura University
214	N.Md.Azmathullah	azmaththenewcollege@gmail.com	The New College/University of Madras
215	Naresh Kumar	mnkumar1206@gmail.com	Nevar System Pvt LTD
216	Naveed Ahamed	naveedahamed67@gmail.com	Kuvempu University
217	Navin Piplani	navin.piplani@gmail.com	INTACH Heritage Academy
218	Navneet Kaur	kaum3452@gmail.com	Akal College of Education ,Mastuana Sahib
219	Navya K K	navya.469@gmail.com	Kerala Forest Research Institute
220	Neha Jaiswal	nehaaka2711@gmail.com	Pondicherry University

Annexure 3: contd.

Sl. No.	Name	E-mail Address	Organization/Affiliation (If any)
221	Nickita Dutta	duttanickita24@gmail.com	St. Edmund's College, Shillong
222	Nikhil Parashar	nikhil.parashar14@gmail.com	
223	Nilkamal Choudhury	nilchoudhury31@gmail.com	
224	Nipu Kumar Das	nipukumar229@gmail.com	Student (ATREE Bengaluru)
225	Niraj Kakati	nirajkk@gmail.com	WII-C2C, under auspices of UNESCO, India
226	Nirmal L Solanki	nirmalsinh_vodafone@ymail.com	Jeel Goswami College of Science and Research
227	Nischay Choudhary	ncnischay22@gmail.com	Aayojan School Of Architecture
228	Nitish Barole	nitish.barole03@gmail.com	Youth for Resilient Community
229	Nitish Kumar	nkumar4@ggn.amity.edu	Amity University
230	Nitya	khendrynitya@gmail.com	
231	Nivedita Khandekar	nivedita.him@gmail.com	NA
232	Niyati Mehta	niyati06@gmail.com	Self Employed
233	Omer Rehman Reshi	omerreshi90@gmail.com	King Fahd University of Petroleum and Minerals
234	Omkar Bhadange	omkar.bhadange_ug21@ashoka.edu.in	Ashoka University
235	Osmond Kharmawphlang	lalmuandavid1@gmail.com	Associate Professor St. Edmund's college
236	Pallabi Brahma	pallabibrahma7@gmail.com	
237	Pallabi Chakraborty	chakrabortypallabi.04@gmail.com	WII- C2C
238	Pandya Param	themuhurta@gmail.com	The MUHURTA
239	Pankaj	modip@rediffmail.com	Intach
240	Paogouthang Hangshing	paogouhangshink11@gmail.com	
241	Parag Dhakate	paragenetics@gmail.com	Uttarakhand Forest Dept
242	Param Pandya	parampandya09@gmail.com	
243	Paramjit Kaur	param31084@gmail.com	Desh Bhagat College of Education, Bardwal-Dhuri
244	Parul Munjal	parulgargmunjal@ansaluniversity.edu.in	Sushant School of Art and Architecture
245	Phalguni Sarkar	sarkarphalguni13@gmail.com	
246	Pooja	pooja@diskovermore.com	
247	Pooja Agrawal	pja@aayojan.edu.in	ASA, Jaipur & Dronah
248	Pooja Nargundkar	pooja.nargundkar@gmail.com	INTACH
249	Poomima Balakrishnan	poorni147@gmail.com	akte
250	Prajakta Dattatray Sushma Bhoite	prajub123@gmail.com	The Institute Of Science, Mumbai
251	Prajakta	prajaktabondare@gmail.com	
252	Prakash N	prakashnprabhas33@gmail.com	Kuvempu University
253	Pramod Vasudev Gaikwad	pg37750@gmail.com	SBS Enviro Aqua Concepts Pvt.Ltd.
254	Pranav Negi	negipranav64@gmail.com	Symbiosis Institute of International Business
255	Pranav Vinod	pvinod.sees18@nalandauniv.edu.in	School of Ecology Environment studies, Nalanda University
256	Pratita Budi	pratitabudiutami@gmail.com	Ipb University
257	Prerona Ghosh	sonaitethered2@gmail.com	Amity Institute of Travel and Tourism
258	Pribat Rai	raipribat86@gmail.com	Department of Geography, St Joseph's College Darjeeling
259	Priti Chandrakant Arage	arage.priti@gmail.com	
260	Priya Bhalla	priyabhalla69nm@gmail.com	
261	Priyadharshini Murugan	mpriyar3613@gmail.com	Tamil Nadu Agricultural University
262	Priyakshi Gogoi	gogoiPriyakshi.92@gmail.com	
263	Priyanka Singh	arpriyanka.s@gmail.com	
264	Prof. P. MUTHAMIL SELVAN	tamil.pms@gmail.com	
265	Rabiya Daimari	rabiyaDaimari07@gmail.com	No
266	Rahul Khare	rkhare@amity.edu	Amity university, Noida
267	Rahul Padmakar Kale	rhikale95@gmail.com	Forest Department
268	Rahul Rana	rahuldoon786@gmail.com	Wildlife institute of India Dehradun
269	Rahul Shivaling Shete	rahulshete2804@gmail.com	Shivaji University ,Kolhapur
270	Raja	rajamanickam1997@gmail.com	
271	Rajeev Sinha	rajeev.sinha@gmail.com	
272	Rajesh Masurkar	raj13.masurkar@gmail.com	Rizvi college
273	Rajesh Talwar	indship@gmail.com	Shipping
274	Rajib Kumar Saha	rajibkumarsaha@hotmail.com	Geological Survey Bangladesh
275	Rajiv Bhatt	rajivpbhatt@gmail.com	N.G.Acharya and D.K. Marathe College
276	Rakesh Kumar	rakeshsingla.singla7@gmail.com	Punjabi University, Patiala
277	Raman Bharadwaj	Ramanbharadwaj1@gmail.com	Ansal university
278	Ramarajan S	sramabio@gmail.com	Sri Paramakalyani College
279	Ramyani Bhattacharjee	0361ramyani@gmail.com	St. Edmunds College , Shillong (NEHU)
280	Ranjan Kumar Borah	ranjan.borah@undp.org	UNDP

Annexure 3: contd.

Sl No.	Name	E-mail Address	Organization/Affiliation (If any)
221	Nickita Dutta	duttanickita24@gmail.com	St. Edmund's College, Shillong
222	Nikhil Parashar	nikhil.parashar14@gmail.com	
223	Nilkamal Choudhury	nilchoudhury31@gmail.com	
224	Nipu Kumar Das	nipukumar229@gmail.com	Student (ATREE Bengaluru)
225	Niraj Kakati	nirajkk@gmail.com	WII-C2C, under auspices of UNESCO, India
226	Nirmal L Solanki	nirmalsinh_vodafone@ymail.com	Jeel Goswami College of Science and Research
227	Nischay Choudhary	ncnischay22@gmail.com	Aayojan School Of Architecture
228	Nitish Barole	nitish.barole03@gmail.com	Youth for Resilient Community
229	Nitish Kumar	nkumar4@ggn.amity.edu	Amity University
230	Nitya	khendrynitya@gmail.com	
231	Nivedita Khandekar	nivedita.him@gmail.com	NA
232	Niyati Mehta	niyati06@gmail.com	Self Employed
233	Omer Rehman Reshi	omerreshi90@gmail.com	King Fahd University of Petroleum and Minerals
234	Omkar Bhadange	omkar.bhadange_ug21@ashoka.edu.in	Ashoka University
235	Osmond Kharmawphlang	lalmuandavid1@gmail.com	Associate Professor St. Edmund's college
236	Pallabi Brahma	pallabibrahma7@gmail.com	
237	Pallabi Chakraborty	chakrabortypallabi.04@gmail.com	WII- C2C
238	Pandya Param	themuhurta@gmail.com	The MUHURTA
239	Pankaj	modip@rediffmail.com	Intach
240	Paogouthang Hangshing	paogouhangshink11@gmail.com	
241	Parag Dhakate	paragenetics@gmail.com	Uttarakhand Forest Dept
242	Param Pandya	parampandya09@gmail.com	
243	Paramjit Kaur	param31084@gmail.com	Desh Bhagat College of Education, Bardwal-Dhuri
244	Parul Munjal	parulgargmunjal@ansaluniversity.edu.in	Sushant School of Art and Architecture
245	Phalguni Sarkar	sarkarphalguni13@gmail.com	
246	Pooja	pooja@diskovermore.com	
247	Pooja Agrawal	pja@aayojan.edu.in	ASA, Jaipur & Dronah
248	Pooja Nargundkar	pooja.nargundkar@gmail.com	INTACH
249	Poornima Balakrishnan	poorni147@gmail.com	aktc
250	Prajakta Dattatray Sushma Bhoite	prajub123@gmail.com	The Institute Of Science, Mumbai
251	Prajakta	prajaktabondare@gmail.com	
252	Prakash N	prakashnprabhas33@gmail.com	Kuvempu University
253	Pramod Vasudev Gaikwad	pg37750@gmail.com	SBS Enviro Aqua Concepts Pvt.Ltd.
254	Pranav Negi	negipranav64@gmail.com	Symbiosis Institute of International Business
255	Pranav Vinod	pvinod.sees18@nalandauniv.edu.in	School of Ecology Environment studies, Nalanda University
256	Pratita Budi	pratitabudiutami@gmail.com	Ipb University
257	Prerona Ghosh	sonaitethered2@gmail.com	Amity Institute of Travel and Tourism
258	Pribat Rai	raipribat86@gmail.com	Department of Geography, St Joseph's College Darjeeling
259	Priti Chandrakant Arage	arage.priti@gmail.com	
260	Priya Bhalla	priyabhalla69nrm@gmail.com	
261	Priyadharshini Murugan	mpriyar3613@gmail.com	Tamil Nadu Agricultural University
262	Priyakshi Gogoi	gogoipriyakshi.92@gmail.com	
263	Priyanka Singh	arpriyanka.s@gmail.com	
264	Prof. P. MUTHAMIL SELVAN	tamil.pms@gmail.com	
265	Rabiya Daimari	rabiya.daimari07@gmail.com	No
266	Rahul Khare	rkhare@amity.edu	Amity university, Noida
267	Rahul Padmakar Kale	rhikale95@gmail.com	Forest Department
268	Rahul Rana	rahuldoon786@gmail.com	Wildlife institute of India Dehradun
269	Rahul Shivaling Shete	rahulshete2804@gmail.com	Shivaji University ,Kolhapur
270	Raja	rajanickam1997@gmail.com	
271	Rajeev Sinha	rajeev.sinha@gmail.com	
272	Rajesh Masurkar	raj13.masurkar@gmail.com	Rizvi college
273	Rajesh Talwar	indship@gmail.com	Shipping
274	Rajib Kumar Saha	rajibkumarsaha@hotmail.com	Geological Survey Bangladesh
275	Rajiv Bhatt	rajivpbhatt@gmail.com	N.G.Acharya and D.K.Marathe College
276	Rakesh Kumar	rakeshsingla.singla7@gmail.com	Punjabi University, Patiala
277	Raman Bharadwaj	Ramanbharadwaj1@gmail.com	Ansal university
278	Ramarajan S	sramabio@gmail.com	Sri Paramakalyani College
279	Ramyani Bhattacharjee	0361ramyani@gmail.com	St. Edmunds College , Shillong (NEHU)
280	Ranjan Kumar Borah	ranjan.borah@undp.org	UNDP

Annexure 3: contd.

Sl. No.	Name	E-mail Address	Organization/Affiliation (If any)
281	Ravindra Gundu Rao	saveheritage@gmail.com	RGRA
282	Rekha Rani	rekha26684@gmail.com	Banasthali vidyapith university
283	Richa Arora	richaarora106@gmail.com	Forest Research Institute Dehradun
284	Rimjhim Swami	rimjhim92swami@gmail.com	Sushant school of Art and Architecture
285	Rohini Kharate	rohinikharate1712@gmail.com	No
286	Roshme Borgohain	rashmiborgohain20@gmail.com	
287	Ruchi Bhatnagar	ruchi@diskovermore.com	Diskovermore
288	Rumana	maheen.moto@gmail.com	Aaranyak
289	Rupa	roop.bhardwaj2710@gmail.com	CDP India
290	Rutvi Saini	sainirutvi@gmail.com	
291	S.Luxmi Devi	luxmisanasam12@gmail.com	St.Edmunds college
292	Sachin Kumar Garg	earth.sachin@gmail.com	Agrawal Girls College Gangapur City
293	Salama	ummfromummbridge@gmail.com	
294	Salvador	salvador@wii.gov.in	WII
295	Samten Yeshi	saameyes@gmail.com	
296	Samvedna Patidar	samvednasaad@gmail.com	
297	Samvida Rai	samvida.ra@gmail.com	
298	Sana Sajjad Jalili	jalilisana1@gmail.com	The Institute of Science
299	Sanchit Balaram Dhindale	sanchitdhindale11@gmail.com	
300	Sandeep Kumar	ar.sandeep1105@gmail.com	Amity School of Architecture and Planning, Amity University, Noida
301	Sandeep Panchal	2290sandy@gmail.com	Jaypee University Anoopshahr
302	Sanjukta Das	sanjukta.das@dyptc.edu.in	DY Patil School of Architecture, Ambi Pune
303	Satishwari.T.K	Satishwari.karthik@gmail.com	St.Francis de sales college
304	Satyam Gupta	satmaysatyam@gmail.com	
305	Satyam Srivastava	srivastavasatyam09@gmail.com	School of planning and architecture, Bhopal
306	Saumya Tripathi	saumya.8447@gmail.com	Independent Consultant
307	Saurabh Shanu	saurabh.shanu1609@gmail.com	University of petroleum and energy studies
308	Savar Suri	savarsuri@gmail.com	Sushant School Of Art and Architecture
309	Sayanti Basak	sntbasak17@gmail.com	Wildlife Institute of India
310	Sethu Parvathy	sethuparvathy13@gmail.com	independant
311	Shahin Shajahan	shahinshajahan789@gmail.com	Pondicherry University
312	Shaik Hussain	indianwildlifeprotector@gmail.com	
313	Shaivya	shaivyar8@gmail.com	Master's Student
314	Shama Pawar	intachtk@gmail.com	INTACH Anegundi Hanoi Chapter, The Kishkinda Trust
315	Sharmistha Ganguly	gangulysharmistha23@gmail.com	Ranchi University
316	Sharmistha Singh	sharmistha.singh@gmail.com	WII
317	Shashi Sekhar	sekarshashi04@gmail.com	A.N College Patna
318	Shilpa Rani	shilpa.4787@gmail.com	Desh bhagat college of education bardwal
319	Shital Rathod	rshital243@gmail.com	
320	Shivani	shivaniidubey690@gmail.com	Indira Gandhi University
321	Shivani Mishra	shivanim200@gmail.com	Syneos Health Private Limited
322	Shreya Dhiraj Patil	shreyapatil9095@gmail.com	PPES ACS College Alibag
323	Shreya Gupta	ar.shreya.gupta@mmambala.org	MM University
324	Shriya Deepak Rajwade	shriya.rajwade@gmail.com	
325	Shrutika	shruraut98@gmail.com	Kupg centre, karwar
326	Shubham Singh	cutelickshubu1999@gmail.com	Hemvati nandan bahuguna garhwal University.,srinagar garhwal.
327	Shubham U.V Tanpathak	shubhamt29@gmail.com	The Institute of Science
328	Shyamkumar M.V	mvshyamkumar11@gmail.com	
329	Sibasish Sahoo	sibasish13@gmail.com	Wildlife Institute of India, Dehradun
330	Siddhesh Bhogte	bhogte.siddhesh3@gmail.com	
331	Simpy Singh	simpyedu88@gmail.com	CPCB
332	Simran Chowdhary	chowdharysimran19@gmail.com	
333	Simran Gupta	simrangupta2703@gmail.com	Pondicherry University
334	Simran Sethi	simran18@iiserbpr.ac.in	Indian Institute of Science Education and Research, Berhampur
335	Smita Datta Makhija	smita.avesanahc@gmail.com	Avesans
336	Sneh Bagwe	snehbawge123@gmail.com	
337	Sneha	snehasankar22@gmail.com	
338	Sneha Pandey	sneha695@wii.gov.in	Wildlife Institute of India
339	Snehal Tiwari	snehal.tiwari4@gmail.com	
340	Snehalata Krishanat Patil	snehalatapatil1995@gmail.com	Shahid Virpatni Lakshmi Mahavidyalaya, Titave

Annexure 3: contd.

Sl. No.	Name	E-mail Address	Organization/Affiliation (If any)
341	Sohom Seal	seal.sohom@gmail.com	Wildlife Institute of India
342	Somya Mahlawat	somyamahlawat.sm@gmail.com	
343	Sonali	ghoshsonaliwii@gmail.com	MOEFCC
344	Sonam Pandey	sp9879618823@gmail.com	The M.S.University of Baroda
345	Sonia Maheshwari	sonia.maheshwari77@gmail.com	Aayojan School of Architecture Jaipur
346	Sonika Kushwaha	ibcsforall@gmail.com	Indian Biodiversity Conservation Society, jhansi, uttar Pradesh
347	Sonu Kumar	plantloverbot055@gmail.com	
348	Soumana Datta	soumanadatta@gmail.com	University of Rajasthan
349	Soumi Paul	soumi.edward@gmail.com	Bharathidasan University
350	Sowmya P S	bksowmya92@gmail.com	
351	Sreeja S Nair	sreejanair22@gmail.com	UNDRR
352	Sruthi K	96sruthisk@gmail.com	
353	Sthitaprajna Nath Sharma	sthitaprajna64@gmail.com	Ravenshaw University
354	Subhash Chandra Kaushik	drsubashc.Kaushik@mp.gov.in	Government Autonomous College
355	Subhrojit Sengupta	111subhrojit.sengupta.ss@gmail.com	IASST Guwahati
356	Suhas Nana Gosavi	suhas.terranero@gmail.com	TerraNero Environmental solutions PVT LTD
357	Sumita Deb	sumi.deb40@gmail.com	St. Peter's School, Shillong
358	Sumita Sambhaji Thorat	sumitasthorat@gmail.com	V. C. C. Karad
359	Suramya Bansal	bansal.suramya@gmail.com	
360	Sushmita Deb	debsushmita949@gmail.com	IGNOU
361	Sushmita Krishnan	sushmitakrishnan1999@gmail.com	Bharatidasan University
362	Suyash Verma	suyashverma@hotmail.com	Self-Employed
363	Swathi	swathi.ayalasomayajula@gmail.com	NIWE
364	Sweetychanda	sweetychanda357@gmail.com	
365	Tanvi Patil	tanviarvindpatil@gmail.com	Maharshi Dayanand College
366	Tapan Deshpande	tapan.mittal@gmail.com	Thotpot Designs Pvt. Ltd.
367	Tara Bhusal	tara.bhusal36@gmail.com	Goreto Gorkha
368	Teja	teja.gatti999@gmail.com	M.Arch in Conservation
369	Tejaswi Mehta	tejaswi2091@gmail.com	Piramal Museum of Art
370	Tejaswini	tejaswini.petkar@gmail.com	
371	Tejaswini Rai	tra1689@gmail.com	
372	Thileep Asai	kas.thileepan@gmail.com	Individual
373	Tiewlyngksiar Syiemlieh	tiewling.78@gmail.com	St. Mary's College, Shillong, Meghalaya
374	Trishita Debnath	trishitadebnath@gmail.com	Vidyasagar University
375	Tulika R. Agarwal	tulika3107@gmail.com	ASI
376	Udaybhan Yadav	suryday29@gmail.com	Thakur College of Science
377	Uravi Dholaria	uraviddd@gmail.com	Student at CEPT
378	Urmila Prakash Kunder	urmila.uk8@gmail.com	
379	Valerian	cfcval@gmail.com	
380	Vani	Vanireddy8896@gmail.com	
381	Varsha	varshab2606@gmail.com	APU
382	Varsha S	varshas@wii.gov.in	Wildlife Institute of India
383	Varsha S Dharan	vsdhar96@gmail.com	Devic Earth
384	Vbmathur	vbm.ddn@gmail.com	Natioanl Biodiversity Authority
385	Veenita Rani	raniveenita@gmail.com	Chaudhary Charan Singh University, Meerut, Uttar Pradesh
386	Vijay Sehrawat	sehrawatvijay12@gmail.com	Zifinity
387	Vijay Vardhan Pandey	vijayvardhan1989@gmail.com	Forest Research Institute, Dehradun, India
388	Vikram Delu	vikramdelu29@gmail.com	Department of Zoology and Aquaculture CCS Haryana
389	Vikramjeet Singh	vikramvirk07@gmail.com	Vidya Rattan Group of Colleges, Lehra, Sunam Road, Punjab
390	Vikramjit Singh Bal	vikysing10@gmail.com	Eternal Tiger
391	Vinayaka Ks	ks.vinayaka@gmail.com	SVs College, Bantwal, Karnataka
392	Vinita Rahul Hublikar	vinitahublikar@gmail.com	University of Mumbai
393	Vinita Sharma	vinita302003@gmail.com	Central University of Jammu
394	Vinod	vbm.ddn@gmail.com	National Biodiversity Authority
395	Viraj Damodar Chabake	virajchabake@gmail.com	Sonopant Dandekar College, Palghar
396	Vishnuvardhan	vishnusampatkumar@gmail.com	Wildlife institute of india
397	Xavier J Stalin	donustalin@gmail.com	St. Francis de Sales college, Bangalore
398	Yogesh Kumar	yogi.jtsr@gmail.com	Maharaja Ganga Singh University, Bikaner
399	Zeba Siddiqui	zebasiddiqui2712@gmail.com	Gujarat University